


### PRECAUTIONS

#### **FOLLOW ALL LENS USE, CARE and INSERTION/Removal INSTRUCTIONS GIVEN TO YOU BY YOUR EYE DOCTOR!!!**

- ▲ Use the See-Green™ Lens inserter for Insertion only. Do not use to remove lens. For removal, use the DMV Ultra Contact Lens Remover, available at ( <http://www.dalseyadaptives.net/store/> )
  - ▲ Only use preservative-free saline prescribed by your doctor.
  - ▲ Before using, Wash hands thoroughly with soap (without moisturizer) and water, and dry before handling plunger and light.
  - ▲ always wet the tip of the plunger with preservative-free sterile saline prescribed by your doctor. Do not apply a dry plunger to the lens surface.
  - ▲ After each use, wash plunger and remover with warm soapy water, rinse thoroughly. Shake off excess water, blot the plungers dry with a clean paper towel and place your application and remover plunger in the See-Green®™ Vented Storage Vial between uses. **DO NOT** Leave the plunger on the LED (bulb) in between uses. The plunger can trap saline against the LED and plunger. The saline is corrosive and prolonged attachment to the LED will shorten the life of your see-green plunger.
- 
- ▲ Weekly -Wash plunger stands and See-Green®™ Vented Storage Vial weekly with warm soapy water, rinse thoroughly and dry with a clean cloth. Do not wash stand, plunger or vial in dishwasher.
  - ▲ CAUTION: Plunger contains natural rubber latex which may cause allergic reactions. Per manufacturer, lab testing finds no antigenic proteins in this material. Contact us to obtain a Silicone version of our See-green application plunger.
  - ▲ CHOKING HAZARD : Keep this product away from small children.

### GENERAL CARE INSTRUCTIONS

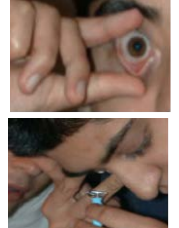
- \* It is recommended that application and removal plungers be replaced upon showing signs of wear or after 6 months of use.
- \* **DO NOT KEEP** the inserter in a bathroom with high moisture content ie, from showering. Doing so will shorten the life of your lens inserter. Store the unit in a dry place.
- \* **DO NOT** leave in a car in freezing or very hot temperatures. Carry the unit on board air flights rather than in luggage in the cargo bay.

### USE INSTRUCTIONS See-Green®™ Lens Inserter

To attach plunger to Light: Wet the bottom of the plunger with sterile saline. While holding the bottom of the plunger, insert the LED bulb in the small hole with a twisting motion so only the clear part of the LED bulb enters the plunger.



Inserting your lens: Follow your doctor's instructions for inserting your lens. Tips: **1)** The lid spread is everything! Hold the lids by the margins, where the lashes meet the lids. The contact points should be centered so as to form a perfect circle. Hold both lids open. Tuck your chin to your chest. Look straight down. Keep the plunger centered on your eye by focusing on the green light in the hole of the plunger. Continue approaching your eye smoothly and steadily. You will feel the fluid, but you are not done yet. Press lens onto the eye.



**2)** Capture the lens with the eyelids by releasing the lids. Don't squint. Maintain the upward pressure on the lens.  
**3)** Release the lens from plunger by squeezing completely. Maintain the upward pressure against the eye, while squeezing to release the lens. The lens has now been released onto your eye. Stay squeezed while you retract the plunger away from the eye.

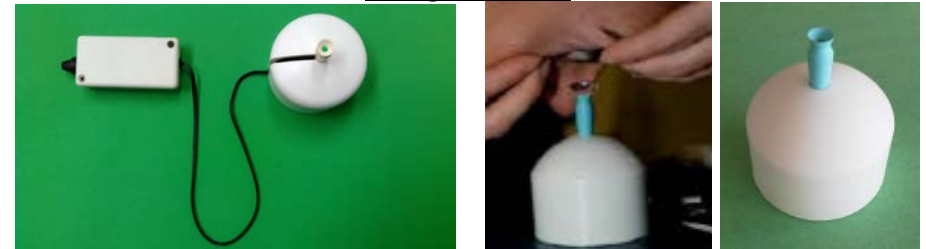
Push Upwards and Squeeze



Stay squeezed while you retract the plunger away



### Plunger Stands



Our stands hold plungers and lenses securely while being prepared for insertion. They provide a base to steady your hands and allow you to get your eye close to the lens prior to lifting it up to the eye. The stand on the left is for use with the See-Green®™ Lens Inserter. The slot allows the wire to enter and to come up as the plunger is put on and lifted up from the stand. Some people need to use two hands to hold open their lids as shown in above. When using the stand this way, instead of raising the plunger to your eye, lower your head smoothly and steadily while focusing on the green light in the hole in the plunger until you will feel the fluid. Press your eye downward onto the lens. Capture the lens with the eyelids by releasing the lids. Lift up your head, and the lens should come off the plunger if there isn't too much suction. If necessary, release the lens from the plunger by squeezing the plunger as described in 3) above. For a demonstration, SEARCH

#### BOSTON SIGHT APPLICATION AND REMOVAL VIDEO

(<http://www.bostonsight.org/PROSE-treatment/Application-and-Removal-Video>)

Enter name and e-mail • Check "Other" box • Type "See-Green User" in the box

Instructions and photos reproduced courtesy of

**Boston Foundation for Sight © 2012**



Innovative Scleral Lens Accessories  
www.dalseyadaptives.net

### Helpful Tips

#### To turn light on and off:

- Press rubber covered button on side of box.
- If your fingers are weak, turn box on end with button against table and press down with hand.



#### Changing Batteries

The LED bulb (light emitting diode) uses very little power from the battery when in use. You should get over 1,000 hours of use from the LED before needing to change the batteries. If you do need to change the batteries, follow these steps:

1. Unscrew the two screws that hold the cover on the white case.



2. Lift off the lid to expose the AAA battery holder. 3. Remove and replace the two AAA batteries. 4. Place the battery holder back in the case; put the lid in place, and screw the two screws back into place.



#### **TIPS FOR STANDS**

- Having your lens set up ready to go on the stand and getting near the lens prior to lifting it to your eye will reduce the chance of saline spilling out and developing bubbles.

- If you need both hands to hold your eye lids open and you have difficulty bending over far enough to get your eye near the stand, then use a bowl turned upside down to elevate the stand.



#### **LED and WIRE Maintenance**

Wipe down the black wire, LED bulb, white battery case and rubber button with a clean damp cloth after each use to get the saline off.

2 year replacement policy for the LED light.  
service@dalseyadaptives.com

U.S. Patent No. 7,163,245



See-Green®™  
Lens Inserters  
•  
Stands

www.dalseyadaptives.net



Since 2007, our products have helped thousands of people overcome the natural aversion and difficulties of inserting large scleral lenses. Our products provide the ultimate solution for those people experiencing difficulty applying their scleral lenses.

#### How our See-Green®™ Products Help

- Most users have a typical level of vision impairment and dexterity, but find that the green light gives them the alignment they need to insert the lens quickly without stress or experiencing the occasional misaligned and painful insertion.
- For those with a general aversion to inserting a lens, we are advised that focusing the eye on the green light, which is further out than the lens, helps reduce stress and prevent flinching and involuntarily darting away of the eye.
- Most users find the stands help them by having the lens filled with saline and ready to go. The user can get close to the lens and have a short distance to lift the plunger to the eye and have more reliable, repetitive success centering the lens and avoiding bubbles. Those with unsteady hands find the stands essential.
- The challenge for others is the difficulty of spreading both eye lids open wide enough. The stands allow such users to free up both hands to pry open their eyelids while slowly lowering their eye on to the lens.
- Users with low vision, vision in one eye only, or use of only one hand find the products essential.
- Some eye doctors use the products to train all of their new scleral lens patients

Strictly follow the instructions given to you by your doctor for handling and care of your lenses and for use of our products. Patients of the Boston Foundation for Sight and its PROSE Clinic Partners must follow all instructions at: <http://www.bostonsight.org/PROSE/PROSE-treatment/Prosthetic-Device-Use-and-Care> Please carefully read and follow all of the use and care instructions. Feel free to contact us if you need help or have any questions. For additional products, visit us at [www.dalseyadaptives.net](http://www.dalseyadaptives.net) . E-mail us at [service@dalseyadaptives.com](mailto:service@dalseyadaptives.com) for service or replacements.

The See Green®™ Lens Inserter is made in the U.S.A. and the LED light comes with a two-year free replacement policy. We provide personal and prompt customer service. We offer to adapt our products on an individual basis for people with special needs, such as extra bright lights for extreme low vision users. Our mission is to continue to support the people who rely on us, and to keep producing, improving and delivering helpful products that are easy to use, economical, and long lasting.

It is our pleasure to make and sell these helpful products, and gratifying to know they make a big difference in the quality of life for so many people who use them every day.

John F. Dalsey, Manager, Dalsey Adaptives, LLC  
1380 Main Street • Suite 202 • Springfield, MA 01103-1441

Tel. (413) 563-2477 • Fax: (413) 736-0101 • email: [info@dalseyadaptives.com](mailto:info@dalseyadaptives.com)